

# Registrering af Trængsel med Bluetooth



23-24. August 2010





Finn Normann

[fnp@keyresearch.dk](mailto:fnp@keyresearch.dk)

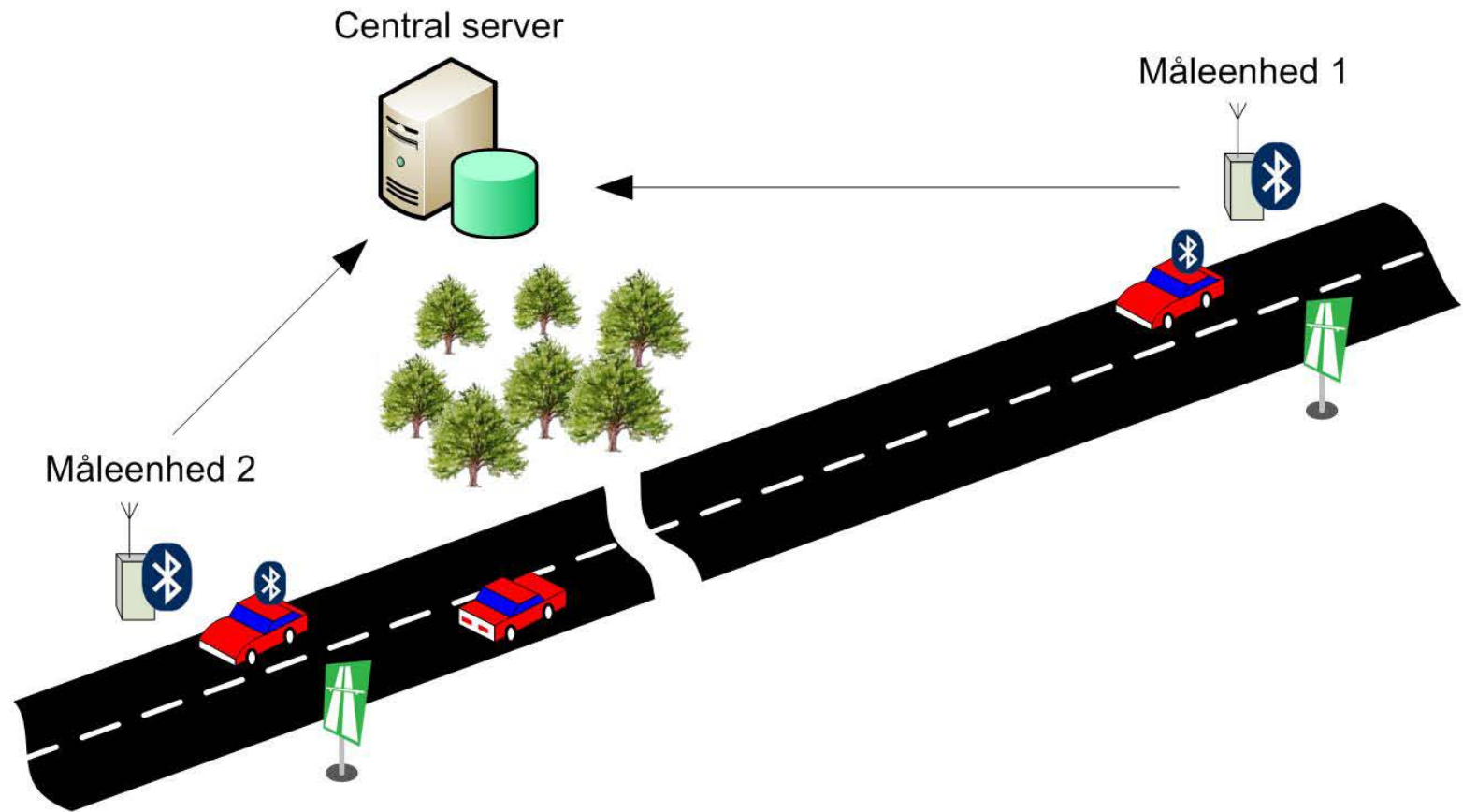
+45 29 89 31 16



## Motivation

- Hvor mange køretøjer måles?
- Måles andet end biler?
- Hvad er registreringsprocenten?  
(detektionrate?)
- Hvordan varierer detektionrate med tid og sted?
- Hvor pålideligt og holdbart er vejsideudstyret?
- Hvor pålideligt er det til rejsetidsmålinger?
- Hvor pålideligt er det til registrering af rutemønstre?

# Eksperiment

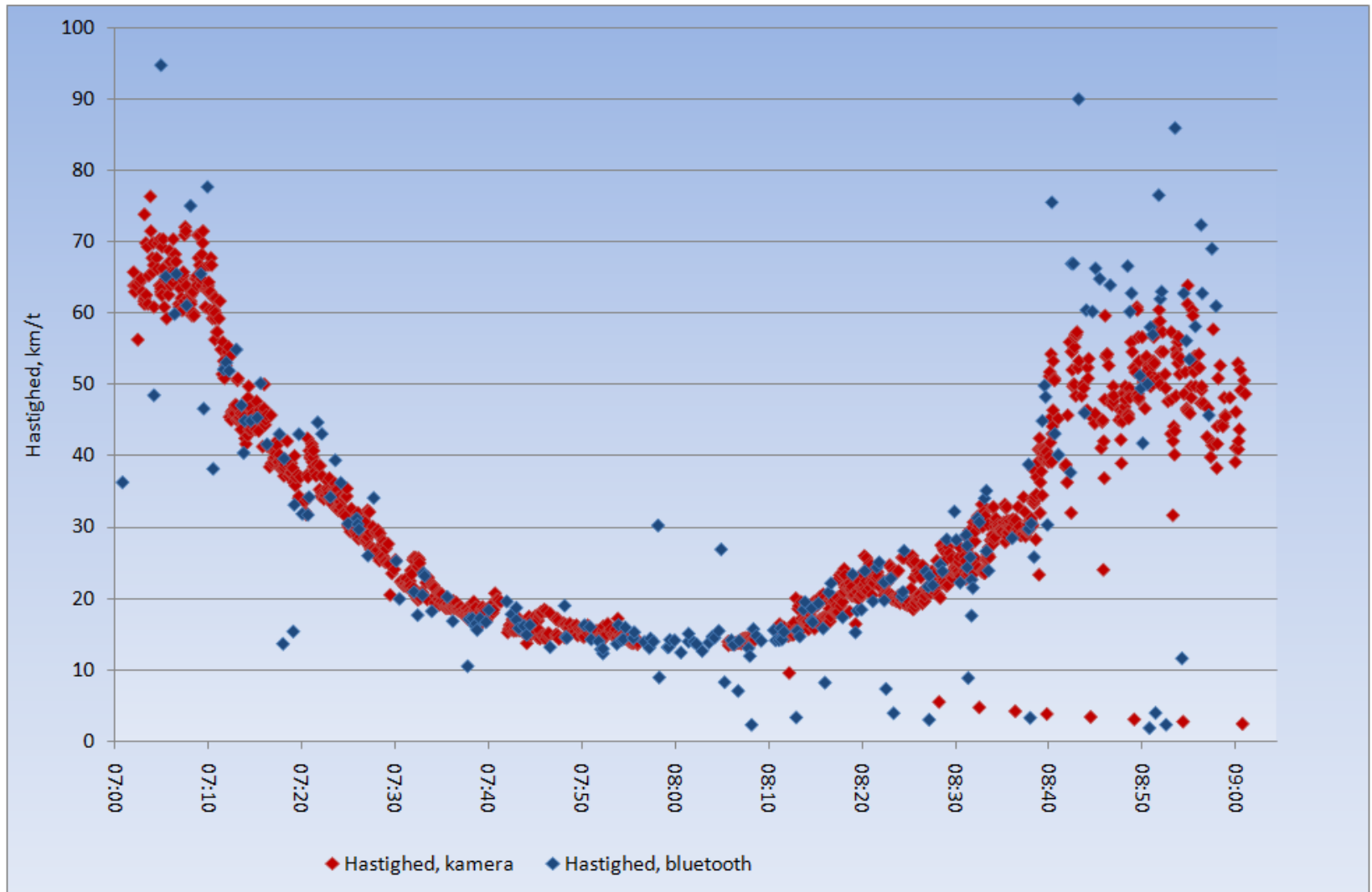




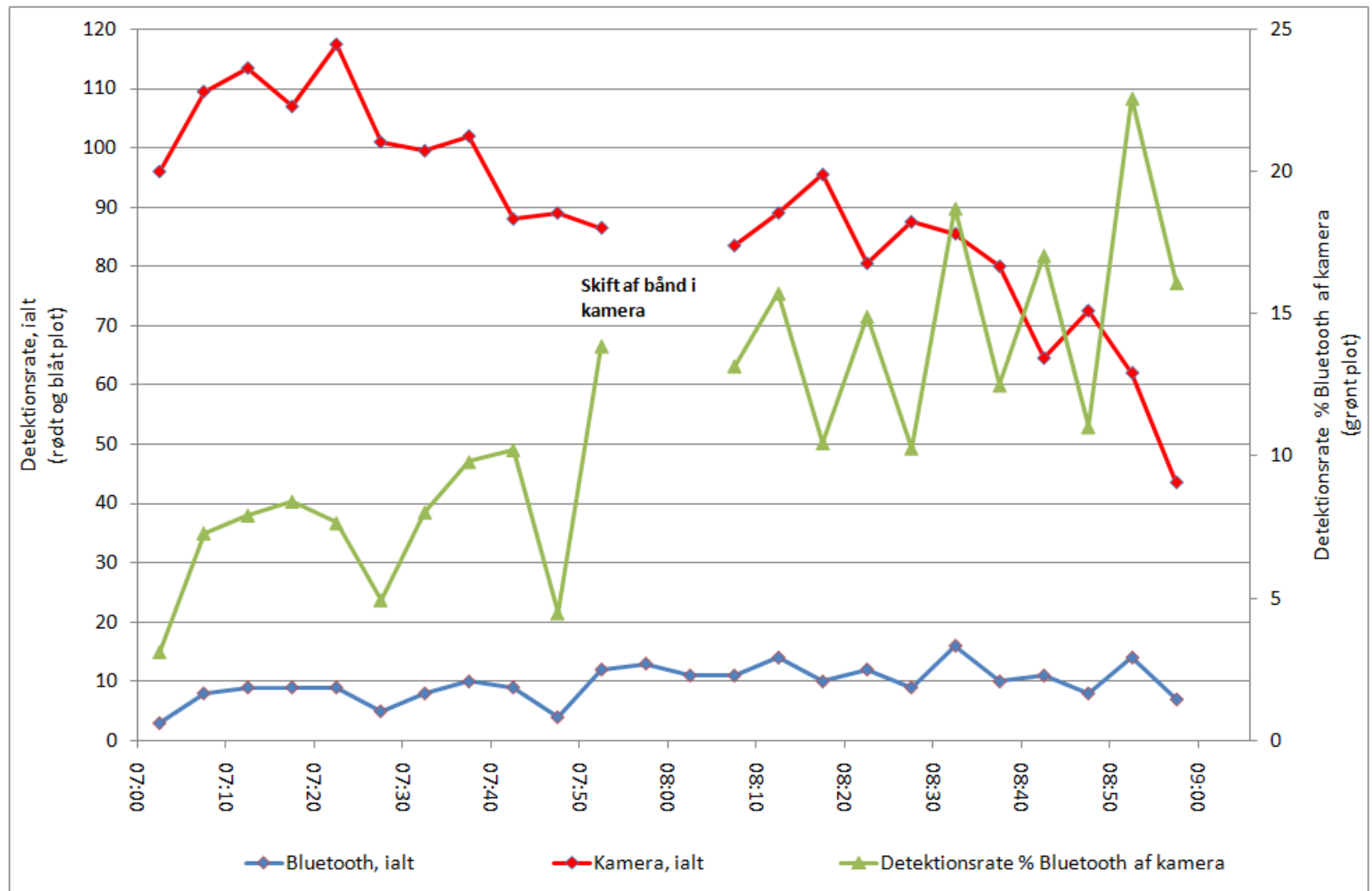
# Indfaldsvej til Århus



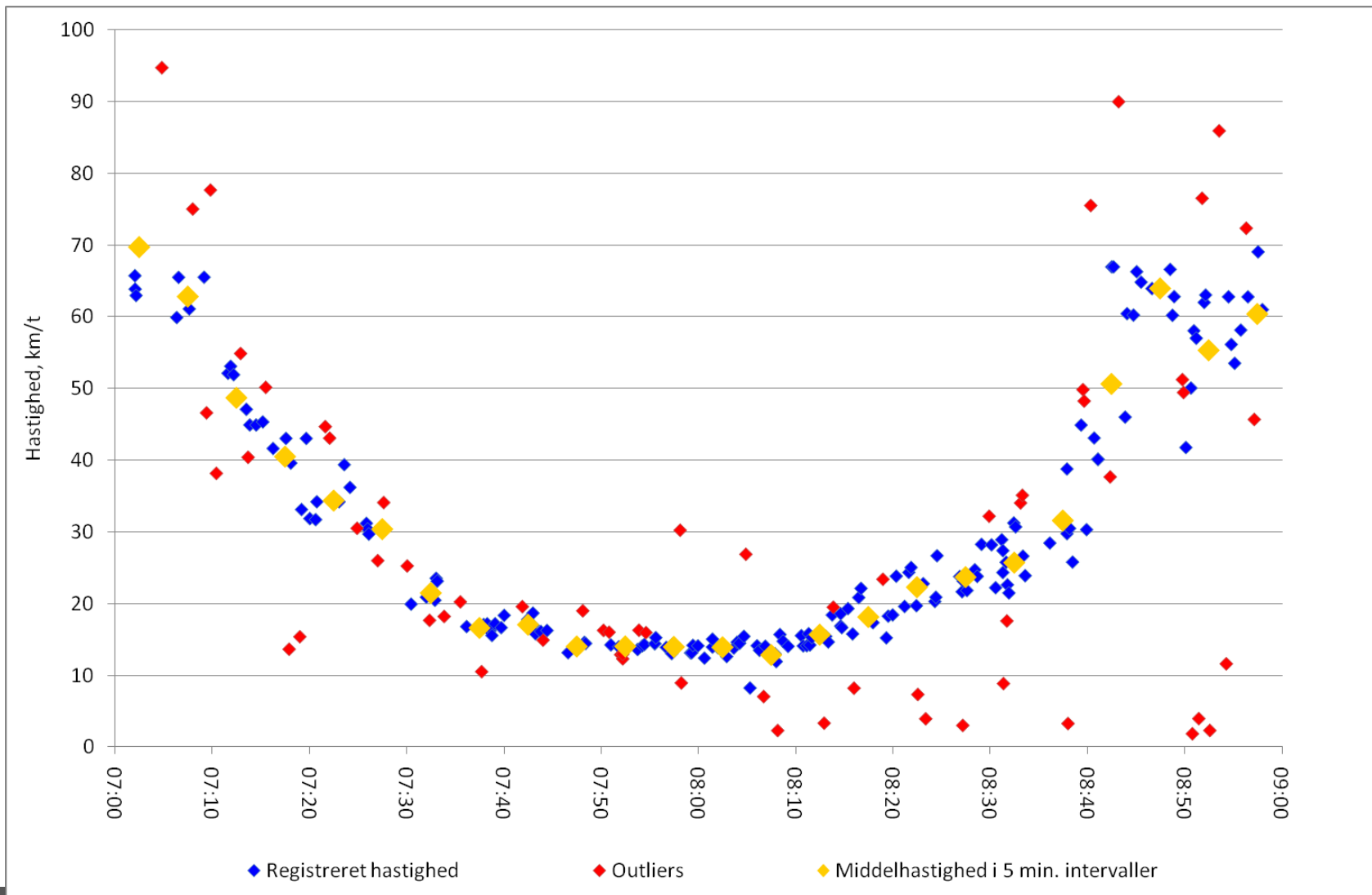
# Video og Bluetooth



# Antal biler og detectionrate

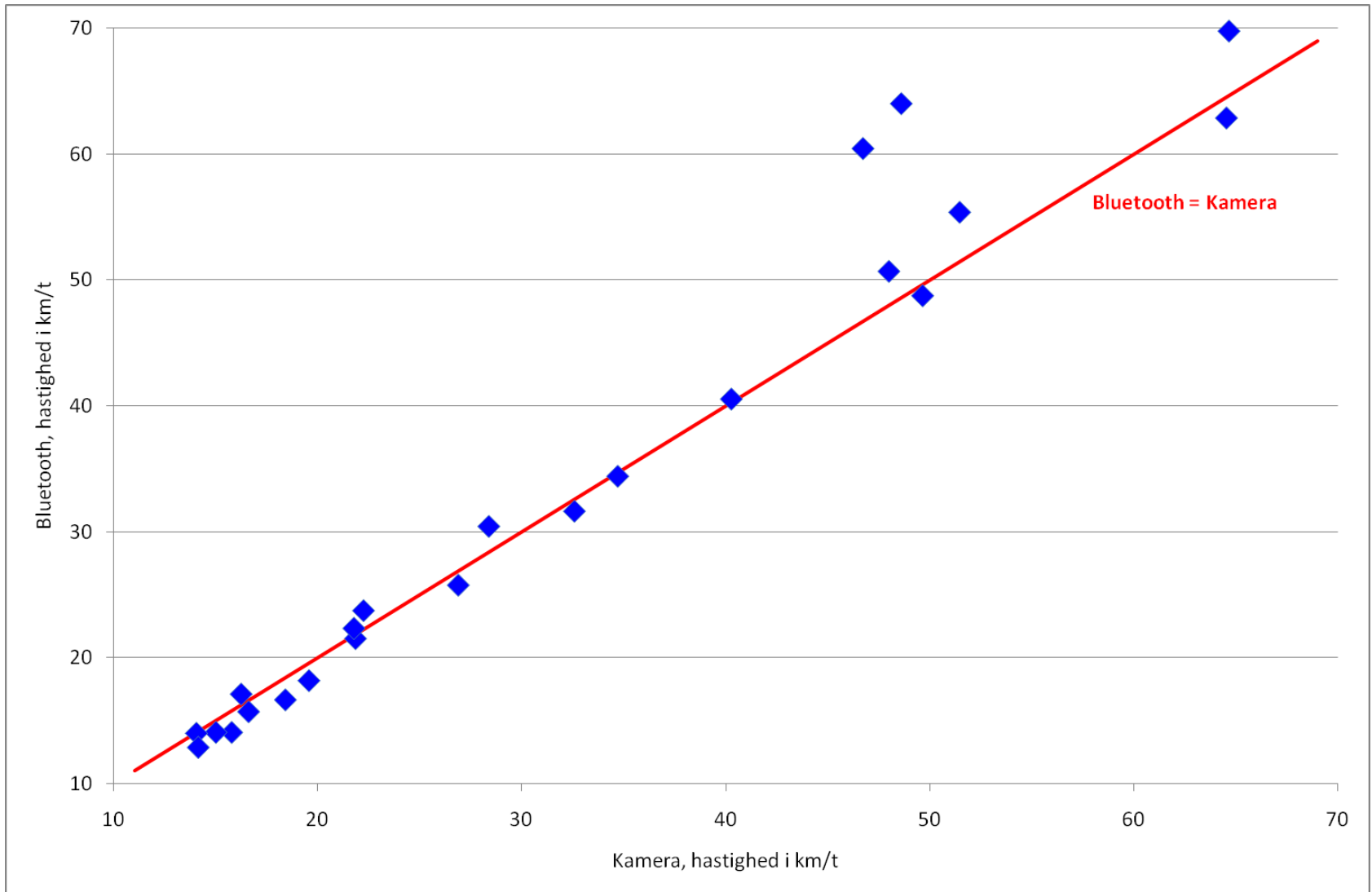


# Støjkilder





# Bluetooth og Video sammenligning



## Fordele og Ulemper

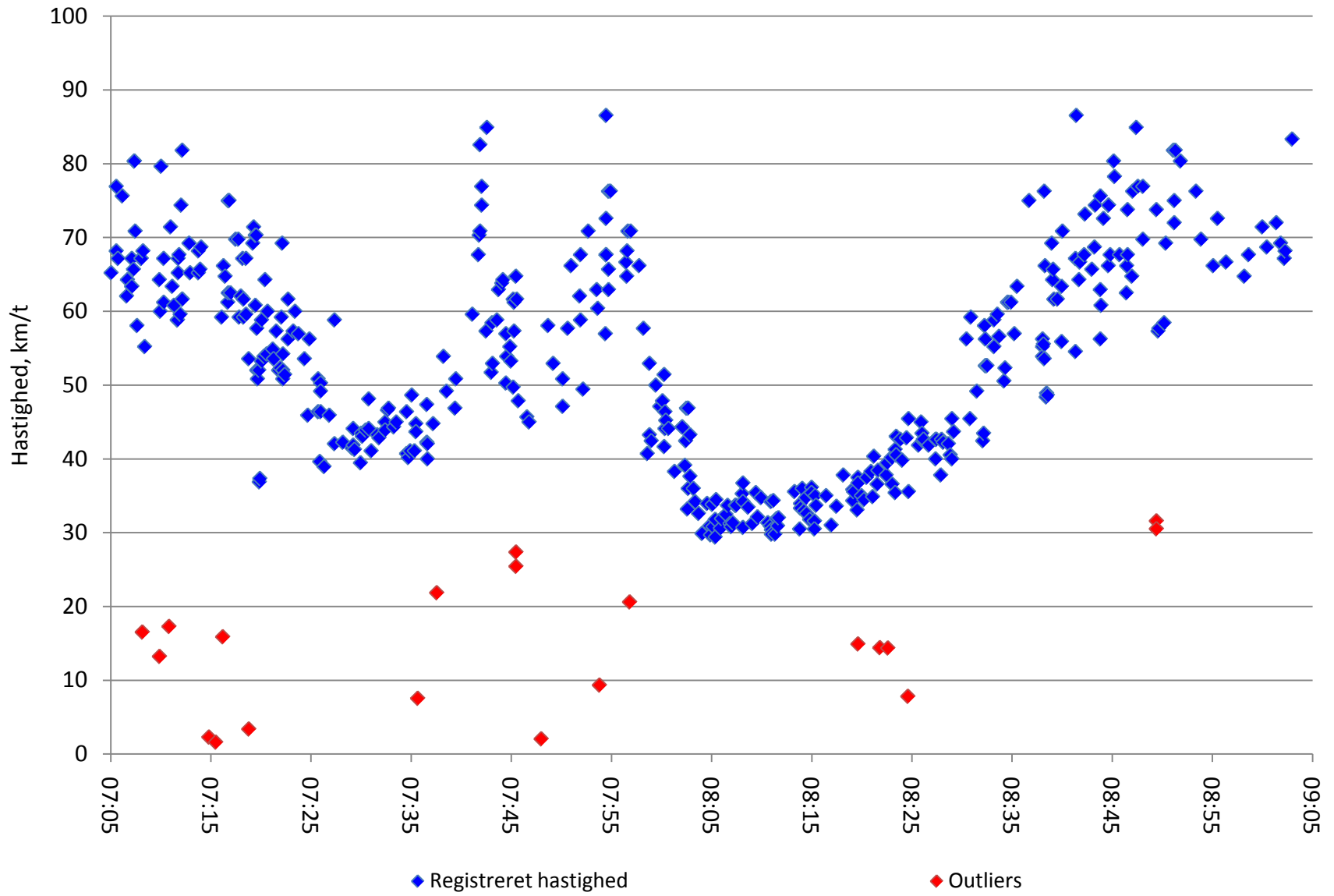
- 😊 Registrering af kødannelser
- 😞 Trafiktælling
- 😊 Billig indkøb
- 😊 Billig installation
- 😊 O-D matricer
- 😊 Adfærdsanalyse
- 😊 Flere modne leverandører





Finn Normann  
[fnp@keyresearch.dk](mailto:fnp@keyresearch.dk)  
+45 29 89 31 16





# OD analyse i vejtrafik

---

**CITY OF RED DEER  
TRAVEL CORDON STUDY**

**Government  
of Alberta** ■  
Transportation

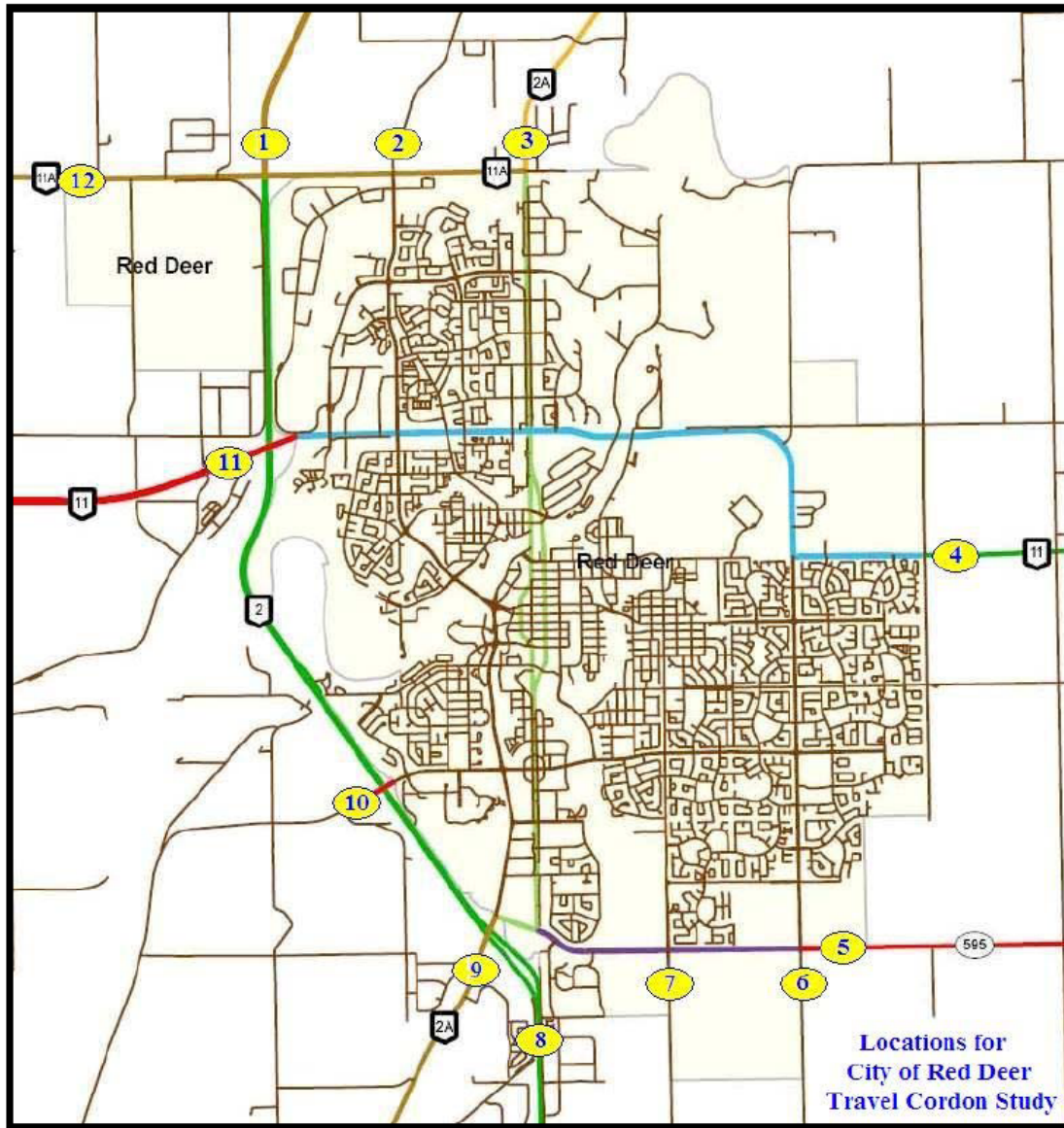
Prepared by:  
Orlando Rodriguez, EIT

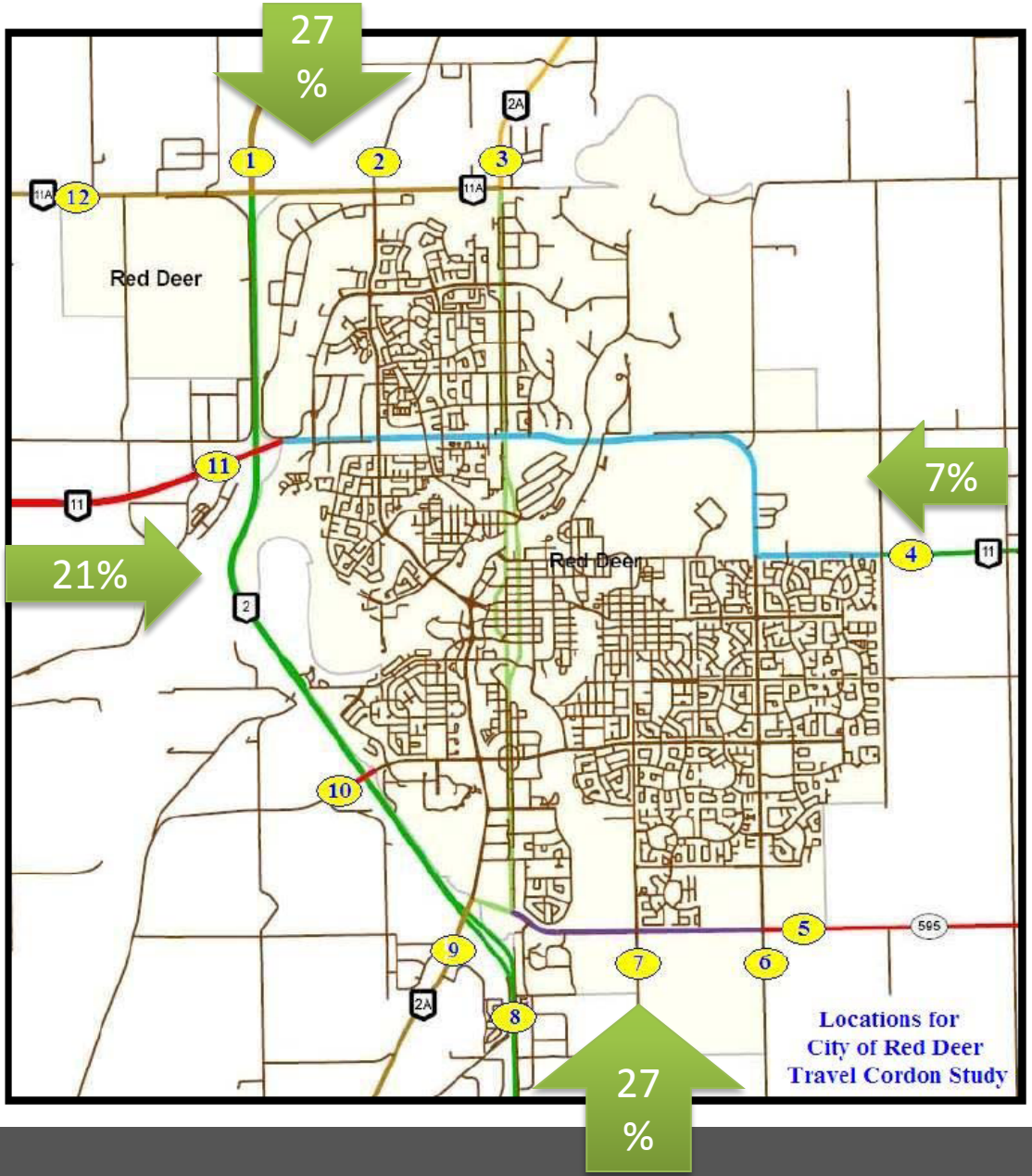
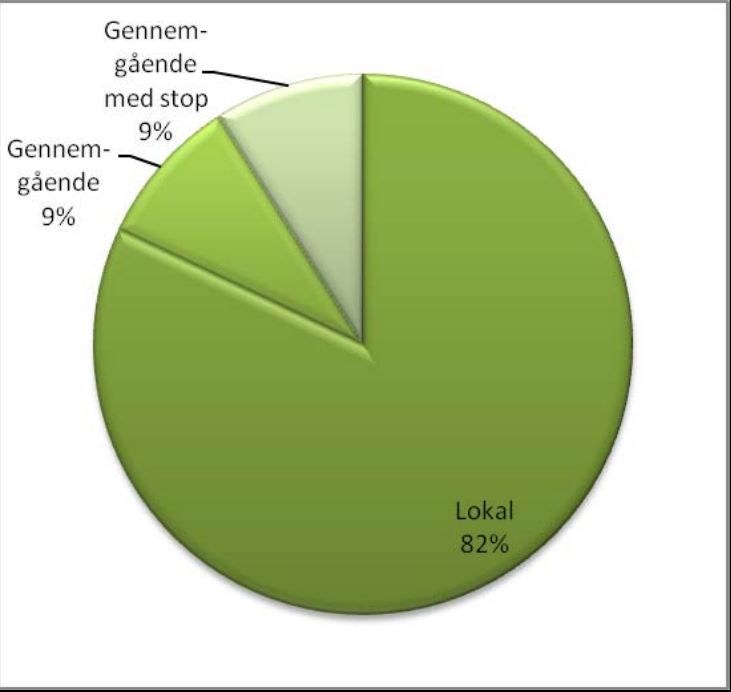
Approved by:  
Peter Kilburn, P. Eng.

December 7, 2009

---












Locations for City of Red Deer Travel Cordon Study

**Red Deer Cordon Study  
Two-Way Traffic  
Flow Map**

**Legend**

-  1 - 500 vehicles per day
-  501 - 1000 vehicles per day
-  1001 - 5000 vehicles per day
-  5001 - 10000 vehicles per day
-  10001 - 50000 vehicles per day

